



**SIGNATURE
ALUMINIUM**

**Building Quality.
Driving Results.**

SHOPFRONT
AND
GLAZING
WORKS

SHOWER
SCREEN

ALUMINIUM
WINDOW
AND DOOR
SYSTEM

CURTAIN
WALL
SYSTEM

ALUMINIUM
CLADDING
SYSTEM

CEILING
AND
PARTITION
SYSTEM

SKYLIGHTS

A subsidiary of Signature International Berhad



the mark of
quality and
customer
satisfaction.

A HALLMARK OF EXCELLENCE. A COMMITMENT FOR SUPERIOR QUALITY AND RESULT.

Established in 2002 as Erson Aluminium & Glass Work and renamed to Signature Aluminium Sdn Bhd (SA) in 2005, we are a subsidiary of the Signature International Berhad. Focusing on the needs of our clients and customers, as a supplier of choice, we derive synergistic strengths and leverage on the integrated group operations towards accelerated growth.

Signature Aluminium (SA) specialises in a diversified range of aluminium-based structures including facade curtain walling especially in external façades which include curtain wall system, glass doors and windows. These are used in residential, retail, government and commercial developments.

In addition, Signature Aluminium (SA) also specialises in customised design and build services for:

- Shopfront and Glazing Works
- Skylights
- Aluminium Cladding System
- Aluminium Window and Door System
- Shower Screen
- Ceiling and Partition System

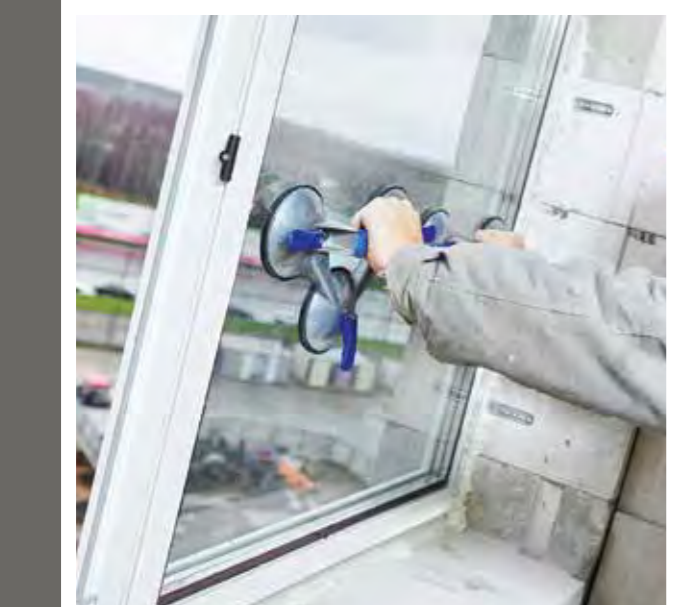


VISION

Our legacy is to be one of the most recognisable facade contractor in the region. Our vision is to be the preferred global brand that leverages on strong synergies and relationships with our clients, customers and stakeholders.

MISSION

Signature Aluminium (SA) is synonymous with quality, efficiency and credibility. We drive growth by creating a culture of continuous improvements and innovations in everything we do. We strive towards industry recognition and sustainability through our company with the finest development projects that make a difference in peoples' lives.



inspiring
innovation design.
driving distinctive
performance.



A HALLMARK OF EXPERIENCE. A DRIVING FORCE OF FORESIGHTEDNESS.

Through our leadership team, Signature Aluminium (SA) thrives upward and forward. Our diversity of project exposure is extensive and entails the widest industry accreditation for our unwavering commitment to quality and results.

At the core of Signature Aluminium (SA) is our management and team members. Together we create synergistic processes to ensure that our business and customers continue to grow in size and strength.

We uphold a spirit of teamwork, integrity, accountability and a passion for creativity and excellence in everything we do. Even as we progress, we strive to upskill and reskill our team members periodically to ensure adherence to standards of quality and to keep abreast of the latest industry trends and technologies.





DESIGN INNOVATION AND UNCOMPROMISED QUALITY

Signature Aluminium (SA) is deeply entrenched as a market leader in our areas of specialisation. We are renowned for our quality facade structures which are seen in across a wide spectrum of developments around Malaysia and abroad.

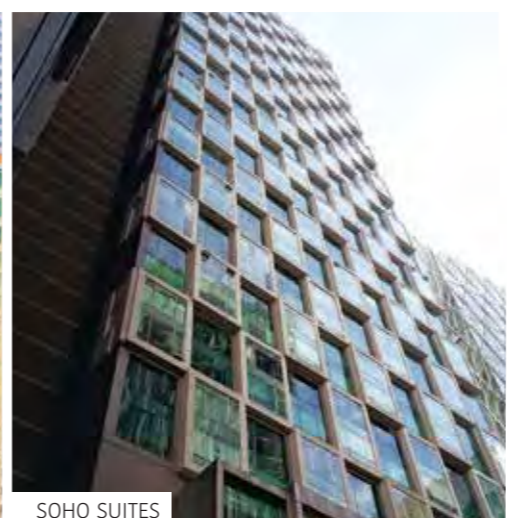
Our philosophy of design, fabrication and construction is to fuse style with functionality, timeless design and technology. Aesthetic design, quality and durability are of importance in everything we do, from planning to every step of the production process up to installation and post-installation customer service.

Our customised designs for façade curtain walls comprise a combination of horizontal and vertical elements fabricated at our factory for on-site assembling. These are sturdy load-bearing structures anchored to the building and can be customised with various different type of windows, doors, panels and structures with a focus on the conformance to water tightness specifications as well as wind resistance standards.





LA GRANDE KIARA



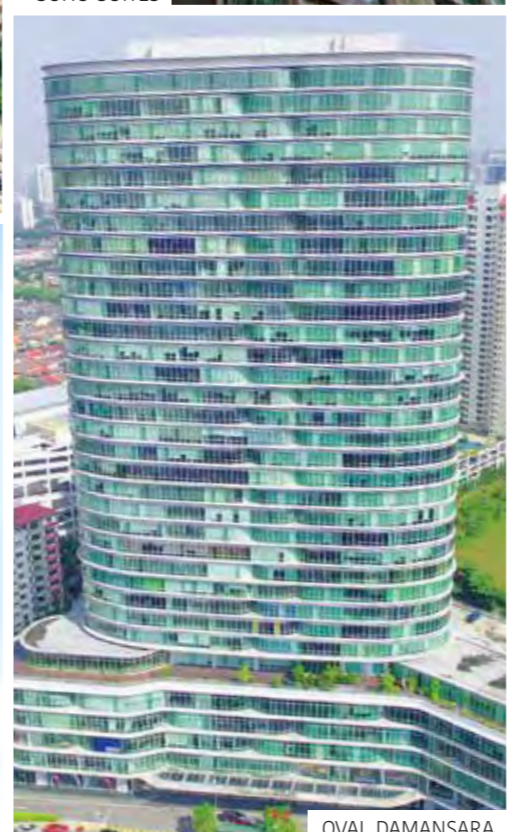
SOHO SUITES



VIPOD RESIDENCES



THE OVAL



OVAL DAMANSARA



USJ ONE AVENUE



TIFFANI KIARA

WORLD-CLASS SIGNATURE PROJECTS

Working collectively, Signature Aluminium (SA) leads the Group's Project Division to meet the needs of our clients. Our versatility as a component materials to providing the full scope of works in various masterpiece development projects, both in Malaysia and overseas. These include countries such as UAE, Thailand, Singapore, Vietnam, India, Pakistan, Sri Lanka and Indonesia.

- 01. THE COVE CONDOMINIUM
Tanjung Bungah, Pulau Pinang
- 02. 8 GURNEY
George Town, Pulau Pinang
- 03. CENTRAL PARK
George Town, Pulau Pinang
- 04. OLIVE TREE RESIDENCE
Bayan Baru, Pulau Pinang
- 05. OLIVE TREE HOTEL
Bayan Baru, Pulau Pinang
- 06. GREEN BEVERLY HILLS CONDOMINIUMS
Nilai, Negeri Sembilan
- 07. BEST WESTERN PREMIER ION DELEMEN
(Block 1, 5 & 6), Genting Highlands, Pahang
- 08. GLENEAGLES MEDINI HOSPITAL
Nusajaya, Johor
- 09. SUNWAY ISKANDAR CITRINE RESIDENCE
Nusajaya, Johor
- 10. SIGNATURE KITCHEN (HQ AND FACTORY)
Kota Damansara, Selangor
- 11. USJ ONE AVENUE
Subang Jaya, Selangor
- 12. MAHSA UNIVERSITY
Jenjarum, Selangor
- 13. ARAGREENS RESIDENCES
Petaling Jaya, Selangor
- 14. SCIENEX BERHAD (NEW OFFICE AND FACTORY)
Shah Alam, Selangor
- 15. LA GRANDE KIARA
Mont Kiara, Kuala Lumpur
- 16. TIFFANI KIARA (BY I-ZEN)
Mont Kiara, Kuala Lumpur
- 17. TITIWANGSA SENTRAL CONDOMINIUM
Wilayah Persekutuan, Kuala Lumpur
- 18. OVAL DAMANSARA
Bukit Kiara, Kuala Lumpur
- 19. THE OVAL
KLCC, Kuala Lumpur
- 20. QUADRO RESIDENCES
KLCC, Kuala Lumpur
- 21. SOHO SUITES
KLCC, Kuala Lumpur
- 22. VIPOD RESIDENCES
KLCC, Kuala Lumpur
- 23. VICTORIA HOME VORTEX
KLCC, Kuala Lumpur
- 24. SKY SUITES
KLCC, Kuala Lumpur

PAVING THE WAY FORWARD

Signature International Berhad pride ourselves on our ability to plan ahead and leverage on market trends towards supremacy and sustainability. Our successes are recognised by both local and regional awards – a testament of our strength and commitment to delivering value to our customers, today and into the future.





SIGNATURE ALUMINIUM SDN BHD (683263-V)

No. 23 Jalan Haji Abdul Manan 3/KU8,
Kawasan Perindustrian Meru Barat,
Klang 42200 Selangor, Malaysia.
TEL: +6 03 3393 1880 / 2880/ 7880
FAX: +6 03 3393 6880

www.signaturealuminium.com.my

